

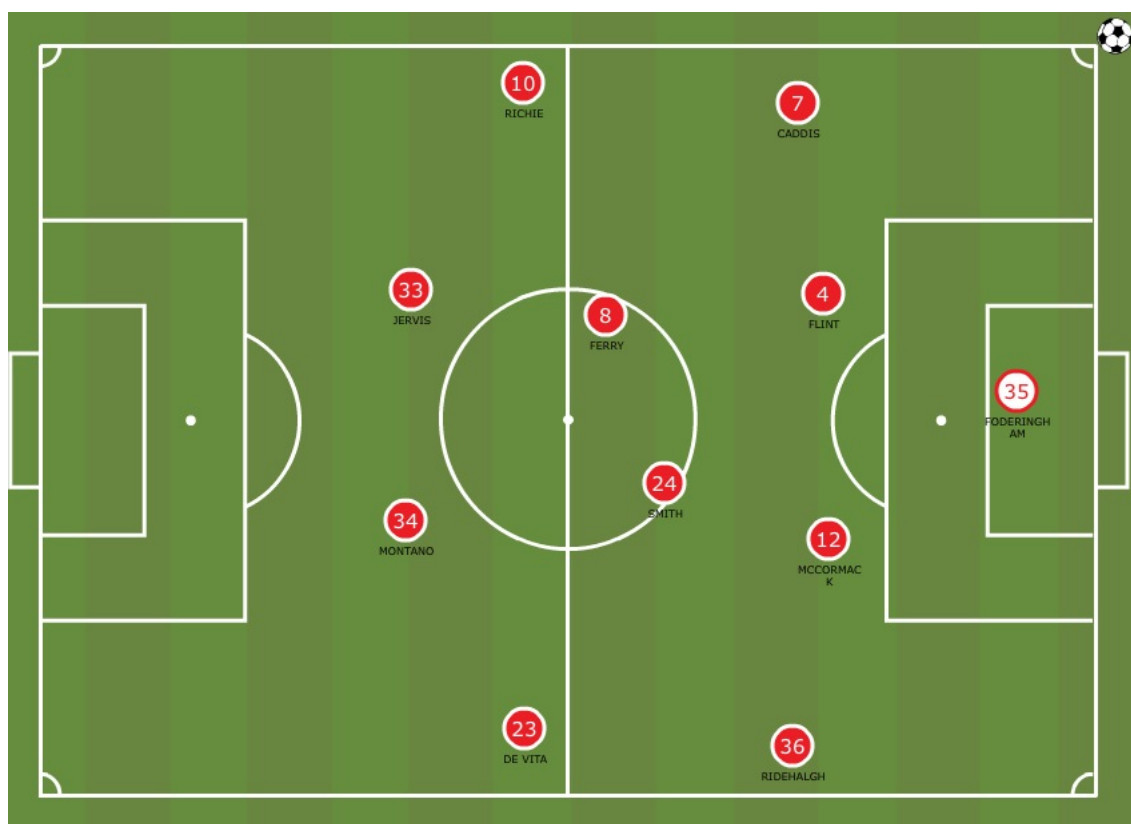
Scouting Report - Anthony Hudson

Game: Swindon v Gillingham
Date: 25th October
Score: 2-0
Venue: The County Ground

Team Set Up

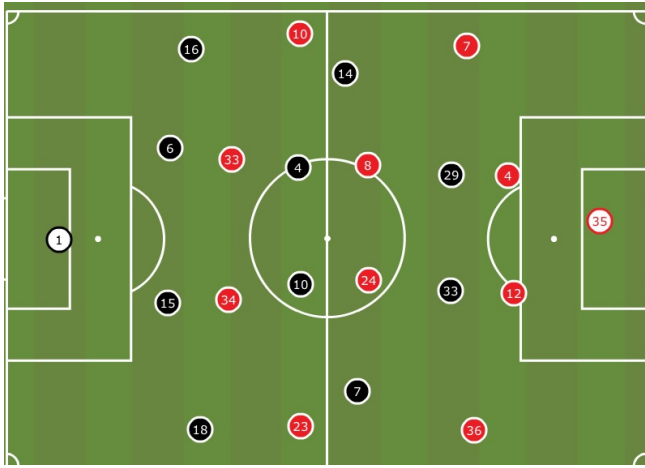
Swindon

4-4-2



Subs:

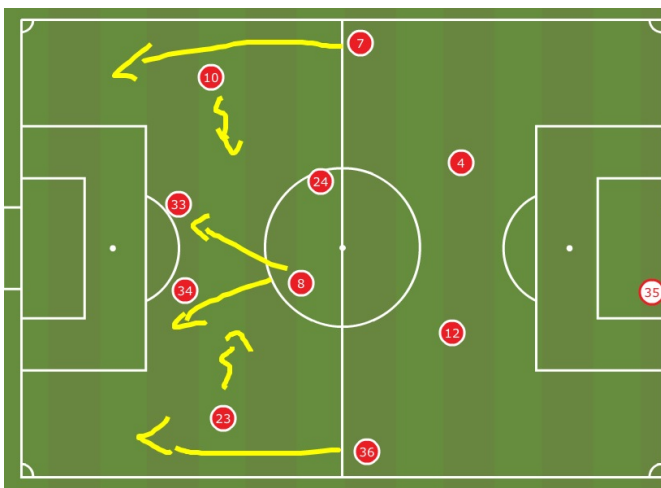
13. Risser. (on for Jervis 85 mins)
17. Connell. (on for Montano 63 mins)
27. Cibocchi (on for McCormack 41 mins)
29. Magera
32. Abdulla



Vs Gillingham 4-4-2

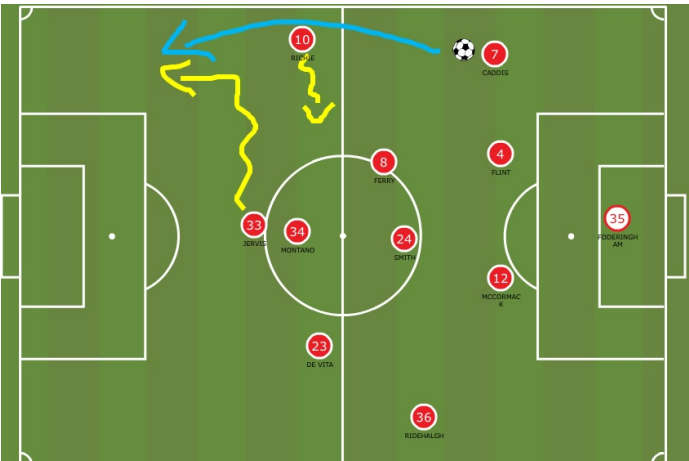
Offensive Organisation

GK all left foot - looked long most of time into Jarvis * both full backs get forward (RB got fw and supported too late/wrong time (leaves big gaps on transition) * RB first pass into 10 Ritchie, who comes off line inside opposition wm pressing fb (effective) - 10 turns and looks forward * same on other side (right footer coming inside) but with less effect (23 all right foot/always comes inside) * width came from both full backs - mainly left back getting further fw * 8 very tidy on ball in middle - very effective/dangerous fw runs in spaces vacated by front men * 24 very poor on ball, most passes square/back, looked weak under pressure - many attacks broke down at him under pressure * main threat - Jarvis 33 - comes short well but most effective running along line making runs in behind opp cb and fb (lack of quality from CBS playing long prevented him getting in, mainly 4 Flint, service inconsistent, long balls 'snow on it') * montano 34 works off him well, running in behind if Jarvis comes short - he will run in behind off Jarvis for all goal kicks/ long balls * main pattern of play - into Jarvis, set to midfield/wm coming in off line, fbs getting fw, crosses in bow with main target - Jarvis, montano, ferry (who burst into box) * Connell 17 effected game when came on (dropped short, sets ball and makes good runs in behind. If he doesn't get ball in hole, turned and made fw runs, good first touch - did things quickly with) * 21 Cibocchi straight swap for McCormack - strong - on ball inconsistent - passing either superb or very poor, always looked for most difficult pass.

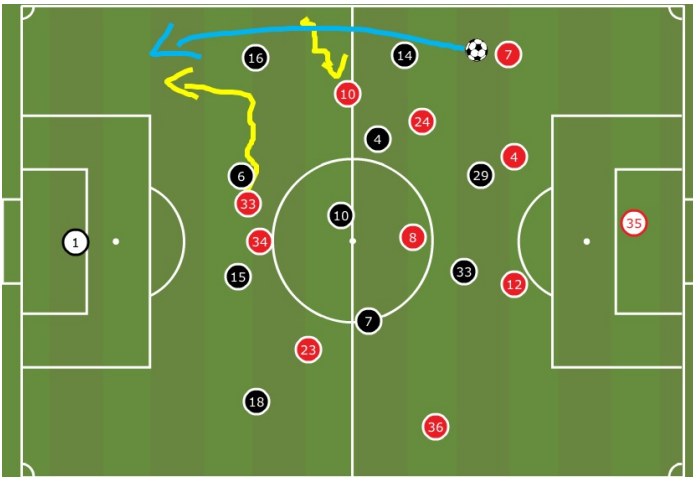


Main attacking movements/causing problems - 8 driving fw (runners) - 10 Ritchie in onto left foot - threat - scored great goal - both FBs pushing fw - good crosses.

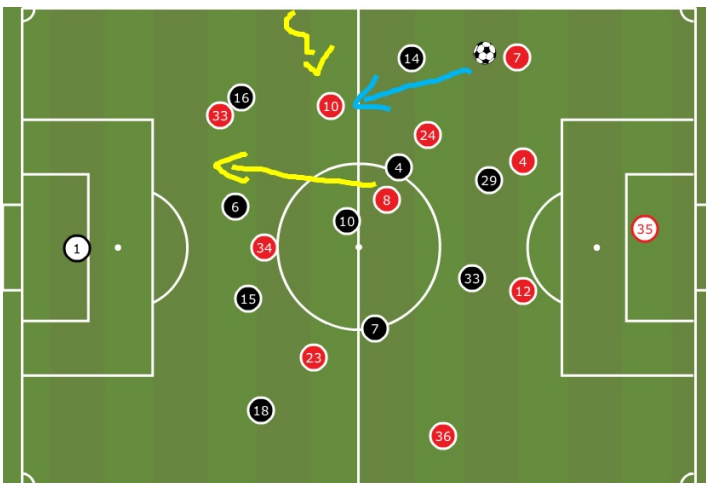
10 coming off line - 33 great runs in between cb/fb - pace/timing good. Poor service though



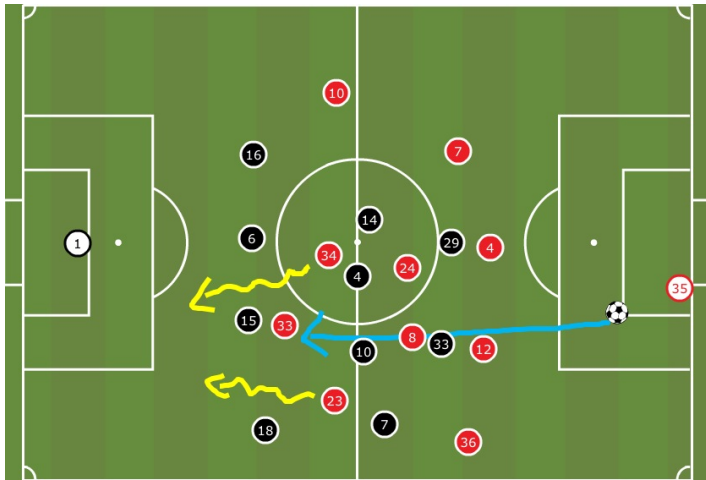
Same runs with opposition



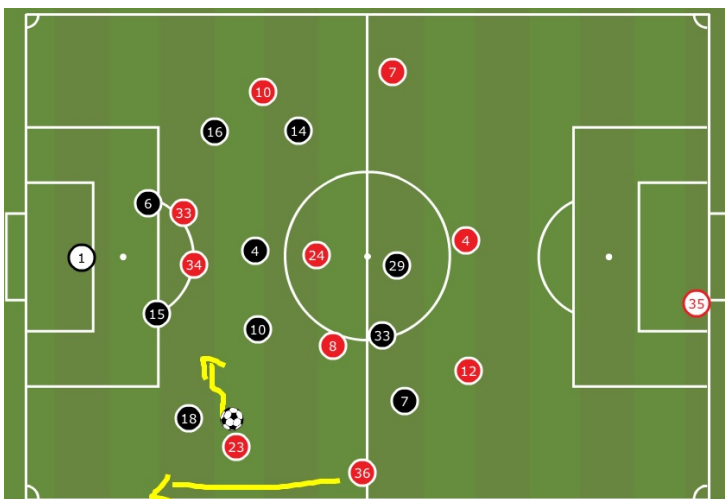
RB first look into 10 - tidy, gets on ball, turns plays fw (wm screen/tight quickly)



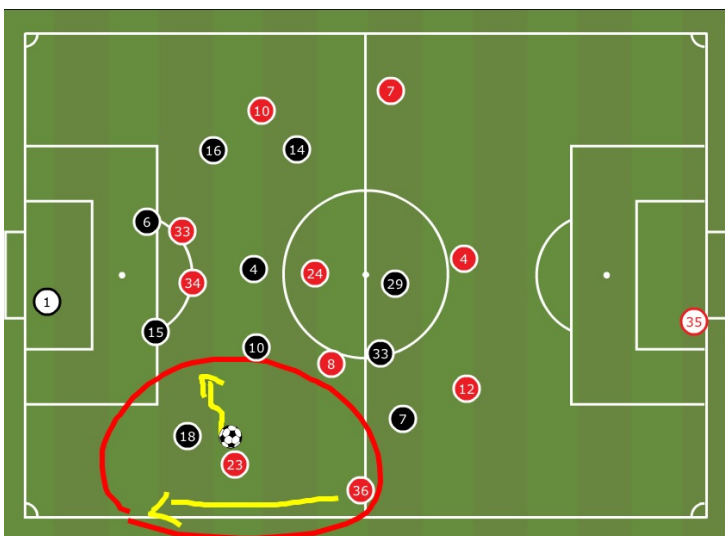
Goal kicks - left foot - brought ball to LHS every time - ALWAYS 33 the target - 34 and 23 run in behind (runners)



23 always comes in onto RF. FB overlap. (force 23 wide)



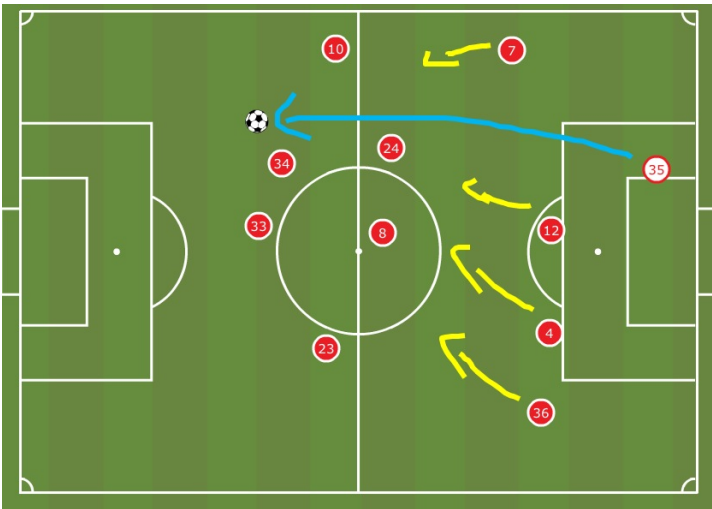
Danger when coming in - poor on left foot going outside.



Offensive Transition

Quick on the break * good pace from Jarvis and montano * 10 Ritchie always looks for counter when GK gets the ball * back four push up well and close gaps after ball played forward

Back four push up well when ball cleared fw



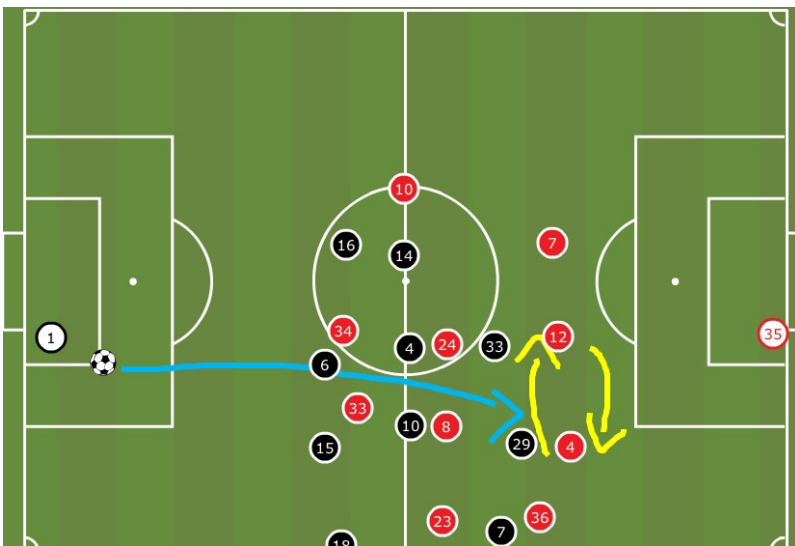
Defensive Organisation

Both 34 and 33 press from front - both will press gk - main work comes from Jarvis 33 - gk puts ball on floor he will press * midfield overran on night by opposition midfield (due to wide men playing narrow and in between lines - mainly Rooney causing problems) * 8 strong and aggressive - 24 smith poor game and physically weak on night (scored but very poor game) - Ritchie 10 and De Vita 23 both on transition started very narrow which made hard for the to press opposition FBs - gave both time on the ball, mainly in first half * 23 physically out strengthened in tackle * RB 7 excellent, strong, quick turning, read well, combative, recovers well * LB 36 poor defensively (main positive was his crossing on night) lost all headers on his side and caught out of posits few times - gets fw too late in possession * 4 flint strong on floor and air - although heading lacks accuracy (2nd balls) - gets under ball a lot, and clearance inconsistent - but solid - got exposed when pulled into wide area and quick feet of Rooney, turned inside out * 12 McCormack steady but came off injured early in game - goal kicks against 4 and 12 swapped positions when ball on LHS - * gk strong, decent in the air - kicking under pressure poor on night.

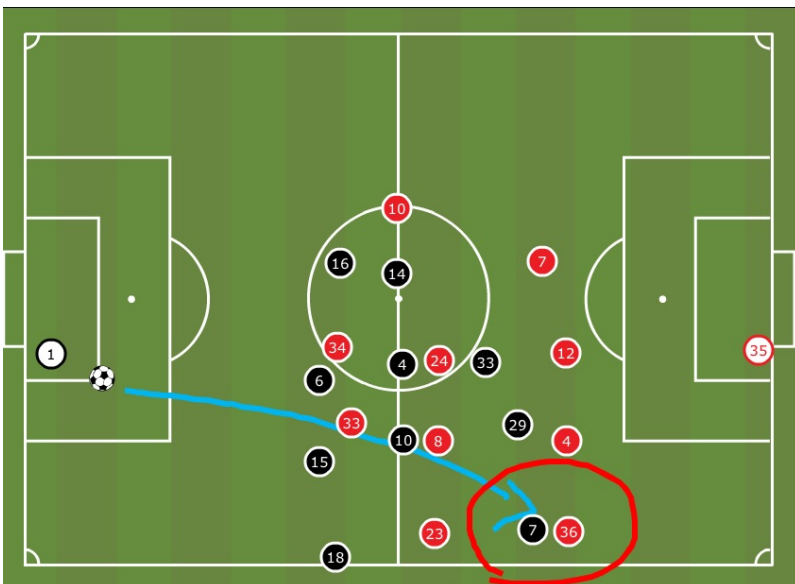
34 and 33 will go press gk and CBS (play quick out back/alert)



2 CBS swap when kicking down the LHS for Flint to head (play short out other side?)



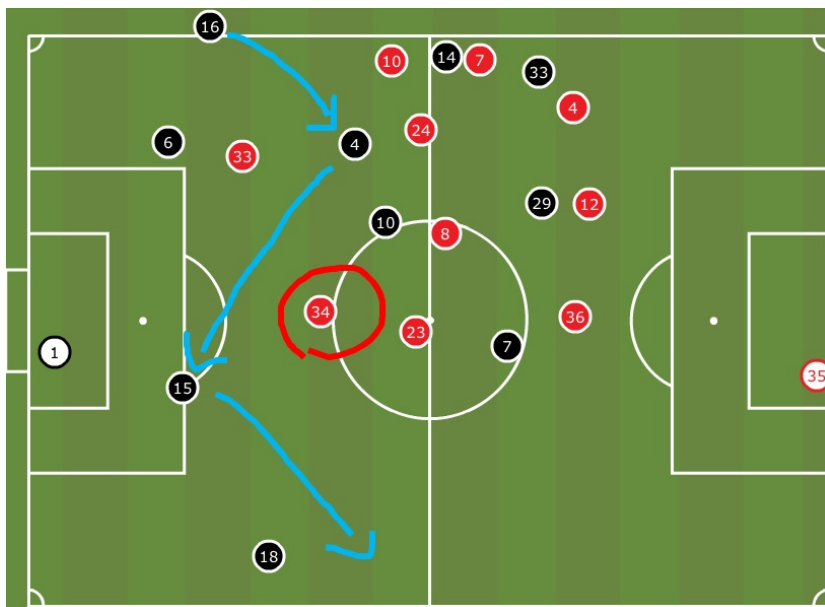
36 LB - very weak heading - lost all headers



Defensive Transition

Very poor defending from throw ins - high up and in defending third * wide men take long to 'switch on' when team lose ball, mainly 23 * flint 4 mistakes when under pressure

From throw in Gillingham df third - let out too easy - montano 34 switch off - not tight, easy to play out and result in cross into Swindon box (do things quickly)



Set Plays

For:

4 - 12 - 33 main headers

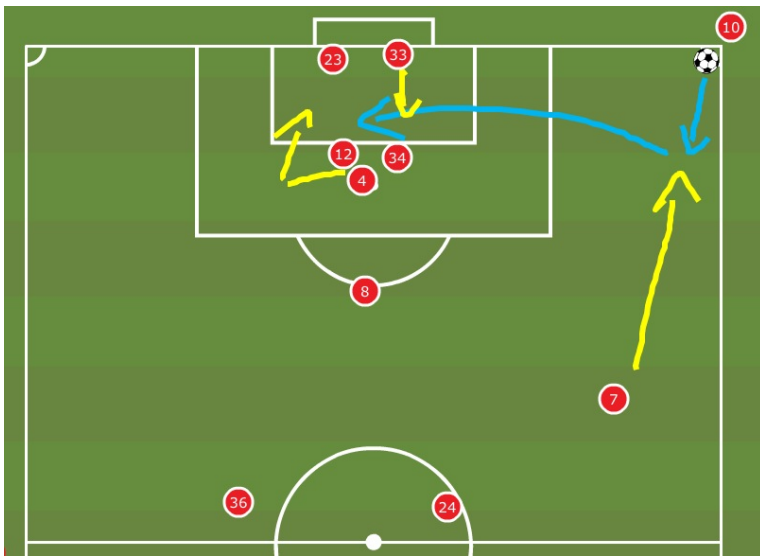
Inswing crosses from both sides - 10 and 23

Both full backs look to come for short one - did on all corners

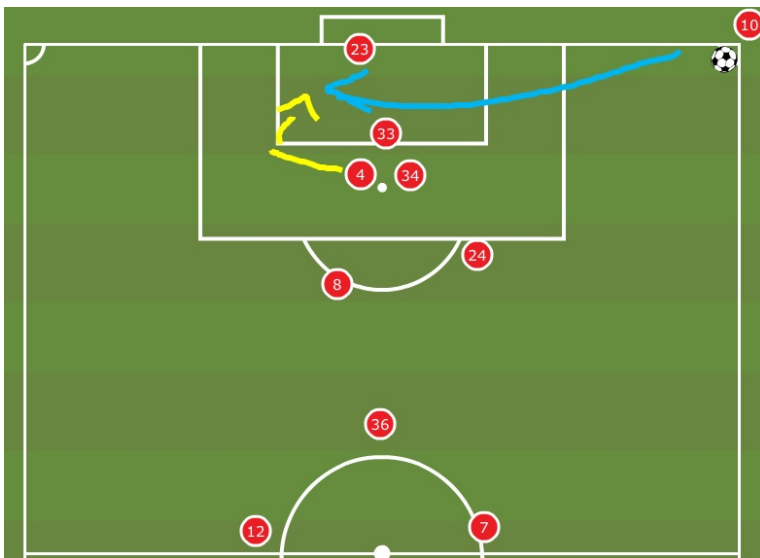
Decent movement but didn't look a real threat on night.

27 Ciabacchi took FK (shot) left foot when central

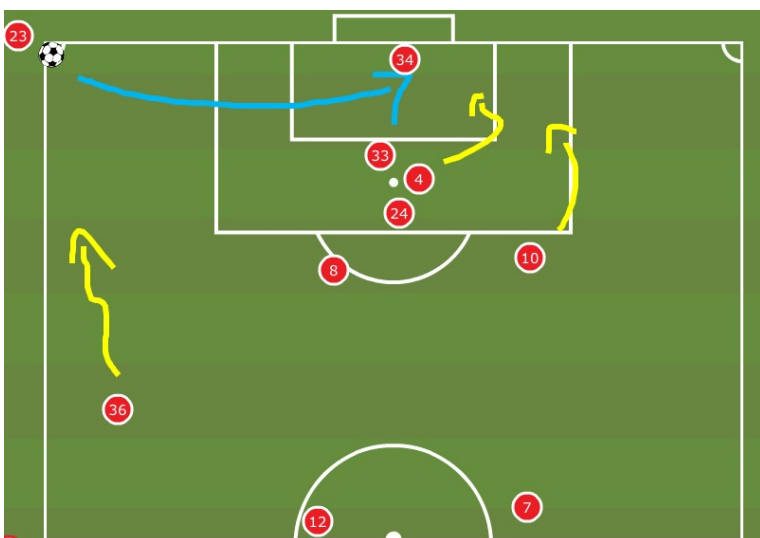
From RHS - left foot - 7 comes short always (1st one he received played 1st time back post - 4 the target peeling off) 33 start on gk. Gillingham left 2 up on night.



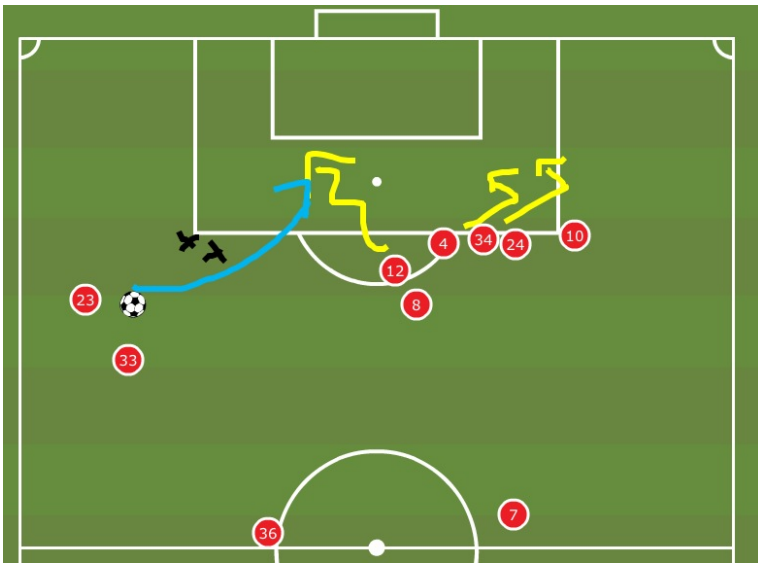
10 left foot - 4 the target again back post - Gillingham left two up.



From LHS - right foot 34 on gk 33/4/24 start in huddle (same starting positions as previous) - 36 shows/comes short - 10 round back. Gillingham left two up.

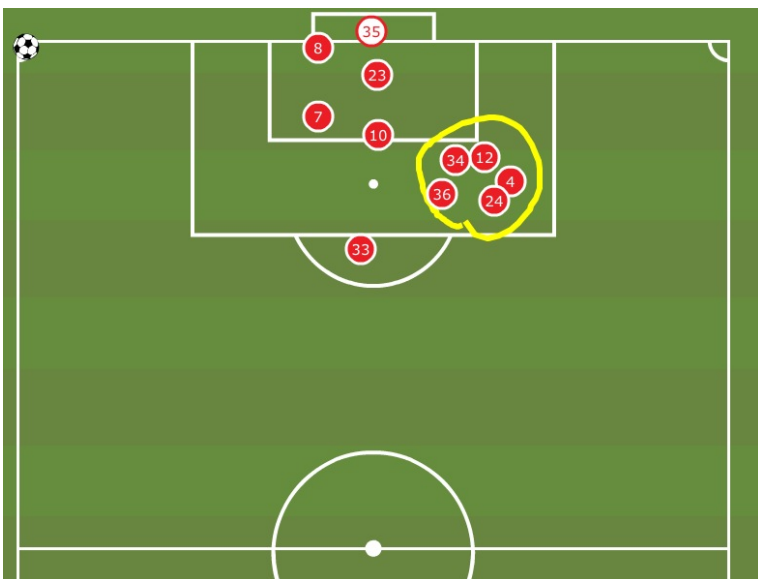


FK LHS 23/33 on ball - 8 on the edge - 4/34/24 attacking - 10 hung out back - 12 driving run toward near post (danger) - (player in hole?)



Defending Corners - both sides

8 on near post - 23 picked up man on gk - 7 in hole - 10 behind (both not marking) - 33 on edge - everyone else pick up man for man - everyone back.



Main Strengths on the Day

- Jarvis running in behind - pace/timing of runs (won free kicks due to defenders diving in and him getting to ball first) and pressing back four (stop at source)
- 8 forward runs - finds gaps and exposes (runners)
- FBs crossing both sides - 36/7 crossing from deep/overlap - both poor on weak foot (show in/wm runners)
- 34 montano - skilful, (inconsistent when under pressure) tricky in box, turning (get tight)
- 10 coming inside and shooting - goal scored
- counter attack - 33 and 10 main targets/players that break

Main Weaknesses on the Day

- LB heading (when goal kicks kept away from 4 flint) and when ball on right foot
- leave big spaces when lose ball out wide due to wm coming inside - especially down there LHS (De Vita 23 discipline/shape - can be lazy)
- Rooney taking up positions narrow and in being 2 cms - couldn't handle on night
- 24 scored but very poor on ball and off - tackling and tracking runners poor - passing very poor
- flint under pressure - mistakes
- goalkeeper kicking under pressure - mistakes
- 28 Ciabacchi - passing out back - erratic - under pressure turnover
- set up from defending throw ins - very slow (do quick)
- Ciabacchi - when taking FKicks on goal, can be exposed on break - and we're on night, commit lots of bodies fw.

Gillingham much better team on the night - passed ball well and created better chances